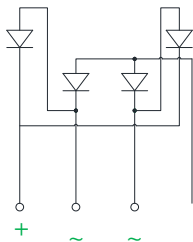
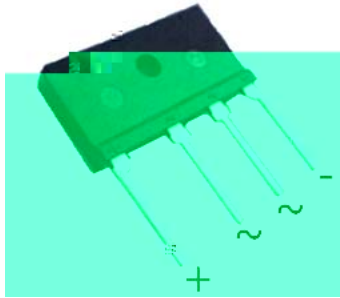


Bridge Rectifiers



Features

- UL recognition, file #E230084
- Glass passivated chip junction
- Thin single in-line package
- High surge current capability
- Solder dip 275 °C max. 7 s, per JESD 22-B106

Typical Applications

General purpose use in AC/DC bridge full wave rectification for switching power supply, home appliances, office equipment, industrial automation applications.

Mechanical Data

Package: JA

Molding compound meets UL 94 V-0 flammability rating, RoHS-compliant, Halogen free

Terminals: Tin plated leads, solderable per J-STD-002 and JESD22-B102

Polarity: As marked on body

Maximum Ratings ($T_a=25$ Unless otherwise specified)

PARAMETER	SYMBOL	UNIT	D20JA05	D20JA10	D20JA20	D20JA40	D20JA60	D20JA80	D20JA100
Device marking code	D20JA05								2
Maximum RMS Voltage	V_{RMS}	V	35	70	140	280	420	560	700
Maximum DC blocking Voltage	V_{DC}	V	50	100	200	400	600	800	1000
Average Rectified Output Current	With heatsink $T_c = 90$	I_O	A	20.0					
@60Hz sine wave, R-load	Without heatsink $T_a = 25$			3.3					
Forward Surge Current (Non-repetitive)	I_{FSM}	A	480						
@60Hz Half-sine wave, 1 cycle, $T_j=25$			240 dÅ						
Current squared time	I^2t	A^2S	240						
@1ms t 8.3ms $T_j=25$, rating of per diode									
Storage temperature	T_{stg}		-55 ~ +150						
Junction temperature	T_j		-55 ~ +150						
Dielectric strength	V_{dis}	KV	2						
@ Terminals to case, AC 1 minute									
Mounting torque	Tor	kg cm	8						
@ Recommend torque 5kg cm									



D20JA05 THRU D20JA100

Electrical Characteristics $T_a=25$ Unless otherwise specified

PARAMETER	SYMBOL	UNIT	TEST CONDITIONS	D20JA05	D20JA10	D20JA20	D20JA40	D20JA60	D20JA80	D20JA100
-----------	--------	------	-----------------	---------	---------	---------	---------	---------	---------	----------

